

Since its inception in 1986, Amy S. Greene Environmental Consultants, Inc. dba **Amy Greene Environmental, a Davey Company "AGE"** has provided professional environmental services for Federal, State and local public agencies; and private sector clients in 11 states to facilitate and expedite planning, design, permitting and construction. **AGE** has an excellent reputation for quality work with local, State and Federal agencies. **AGE** is a wholly owned subsidiary of Davey Resource Group.

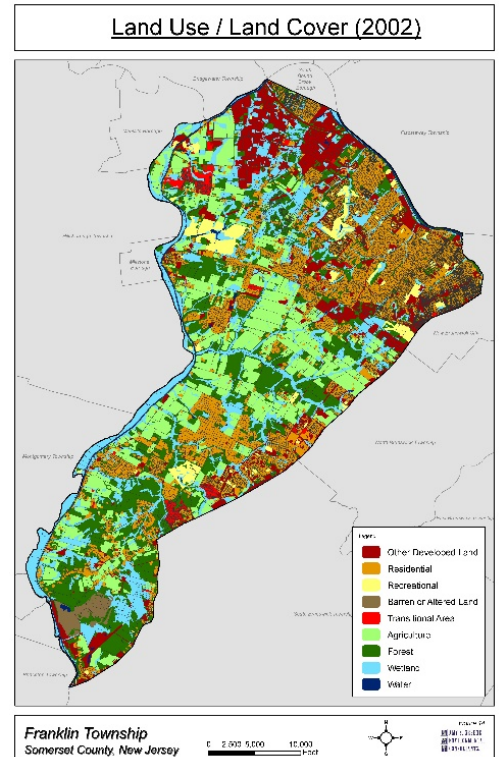
Our Services Include:

- ◆ Wetland delineation, functional assessment and permitting
- ◆ Wetland mitigation design, installation and construction and post-construction monitoring
- ◆ Flood Hazard Area, Coastal/CAFRA, Pinelands and Waterfront Development Permitting
- ◆ Endangered and threatened vegetation and wildlife species surveys and biological assessments
- ◆ Stream, streambank and riparian corridor restoration design and construction monitoring
- ◆ Habitat restoration, reforestation and management plans
- ◆ Tree inventories and NJDEP Green Acres approvals
- ◆ Environmental Impact Assessments and Impact Statements - NEPA, State and Local
- ◆ Aquatic, Marine and Terrestrial ecological surveys and Wildlife surveys
- ◆ Soil Erosion and Sediment Control Planning and Monitoring
- ◆ GIS mapping and analysis/GPS mapping
- ◆ Natural Resource Inventory
- ◆ Environmental Construction Monitoring
- ◆ Expert Testimony

Our staff maintains professional certifications including: USACE Certified Wetland Delineator, Society of Wetland Scientist Professional Wetland Scientist; ESA Senior Ecologist; US Fish and Wildlife Service Habitat Evaluation Procedures; Federal Wetlands Evaluation Technique; Certified Tree Expert; NJ State Approved Forester; Certified Soil Scientist; Certified Soil Erosion and Sediment Control Specialist; NJDEP Ornithologist and Aquatic Biologist; and U.S. Fish and Wildlife Service Recognized Qualified Bog Turtle Surveyor. Our scientists are also OSHA HAZWOPER trained.

AGE has assisted numerous Planning Boards and Environmental Commissions in planning activities including preparation of Environmental Resource Inventories, Open Space Plans and Greenways Plans for inclusion in Land Use Master Plans.

AGE has twice received the NJ Native Plant Society Environmental Preservation/Habitat Rescue Award for the use of native plants. We have also received the Soil and Water Conservation Society Ecological Excellence Award.



4 Walter E. Foran Boulevard | Suite 209 ■ Flemington, NJ 08822

Phone 908.788.9676 ■ Fax 908.788.6788

Contact: Sue Quackenbush, PWS

Department Manager | Ecology & Permitting

Contact: Harry Strano, QBTS

Senior Project Manager

www.amygreene.com ■ agemarketing@davey.com

GSA Schedule Contract No. GS-10F-0002T

REPRESENTATIVE MUNICIPALITIES PROJECT EXPERIENCE

- ♦ **Essex County Department of Parks and Cultural Affairs, Essex County, NJ.** AGE was contracted to research the natural and cultural resources of Essex County, and prepare an Environmental Resource Inventory (ERI). Specific topics covered within the Essex ERI include historic resources; climate conditions related to urban environments; geologic features; aquifers, wellheads and public water supply; contaminated sites including Superfund and brownfields; soils classification and quality; drainage basins and surface water quality; point and nonpoint pollution; floodplains and NJDEP *Flood Hazard Area Control Act*; noise and air quality; land use/land cover and open space; wildlife including fisheries, endangered plant and animal species, and key wildlife habitats; and information on various environmental organizations. AGE staff corresponded with the client and presented a draft, draft final and final document to the county, commission and public.
- ♦ **Bloomsbury Borough, Natural Resource Inventory.** Described and mapped the natural resources, cultural conditions and environmental features within the Borough.
- ♦ **Cranbury Township Environmental Resource Inventory.** Provided both visual depictions of environmental resources, in the form of mapping information, and text that described these resources, their sensitivities and limitations for development and suggested measures for protection of sensitive resources.
- ♦ **Wayne Township, Review of Proposed Residential Development.** Assessed the location and resource value of onsite wetlands and performed a threatened & endangered species survey, which led to the classification of onsite wetlands as exceptional resource value.
- ♦ **Princeton Township, Dredging of Community Park North Pond.** Identified a feasible and cost-effective method for dredging the pond while limiting the disturbance to the park's natural setting and addressing environmental constraints. Mapped wetlands and obtained the appropriate environmental permits for the project.
- ♦ **Borough of Hightstown Environmental Commission, Greenway Plan.** Prepared a Greenway Plan under a NJ State Green Acres Program Grant as well as mapping of environmentally sensitive areas and historic sites in the Borough.
- ♦ **City of Perth Amboy Department of Municipal Utilities, Environmental Inventories and Impact Assessment Report for Controlling Combined Sewer Overflows.** Prepared detailed maps identifying environmental constraints as well as environmentally sensitive areas. Performed assessment of project environmental impacts.
- ♦ **Liberty Township, Water Quality Review for Mountain Lake.** Prepared a Water Quality Report for Mountain Lake. Reviewed and interpreted water quality analytical data obtained from locations on the Lake over a one-year period. Water quality trends and estimates for the eutrophic state of the lake were evaluated. Collected surface water quality data and utilized it as a standard for the lake ecosystem.
- ♦ **Upper Deerfield Township Environmental Commission, Upper Deerfield Township, Cumberland County, NJ.** AGE researched the Natural and Cultural resources of the Township, and prepared an Environmental Resources Inventory (ERI). AGE staff corresponded with environmental commission members, provided the draft document and final results to the Commission/public.
- ♦ **Bernardsville Borough Environmental Commission, Environmental Resources Inventory, Somerset County, NJ** AGE was contracted to update an existing Environmental Resource Inventory (ERI). Provided new text on all municipal natural resources, conditions and limitations. Combined existing Upper Raritan Watershed Association (URWA) municipal mapping with updated AGE mapping. Worked closely with the Commission to properly merge existing and updated mapping within the single document.
- ♦ **Livingston Township Environmental Commission Environmental Resources Inventory, Essex County, NJ.** AGE prepared an Environmental Resources Inventory (ERI) by researching natural and cultural resources of the township and preparing a document that reflects the municipal resources and limitations. All Environmental Resources mapping was prepared using GIS. Presented the project scope, draft document and final results to the Commission and the public.
- ♦ **Delaware Township Proposed Department of Public Works/Police Site, Hunterdon County, NJ.** Delaware Township Committee. AGE performed a preliminary environmental screening of the study area including a preliminary wetland investigation of the property. Resources identified in the screening include wetlands, wetland transition areas, streams, floodplains, riparian zones, and endangered and threatened species habitat. Prepared a letter report of our findings including an assessment of environmental permitting feasibility for the proposed modular police station and storage facilities. For the selected project site, AGE performed a wetland delineation and prepared a successful application to NJDEP for a Regulatory Line Verification Letter of Interpretation.